

# Blue Lake Elementary



Kindergarten Registration  
April 2024



# Today's Agenda

01

School Overview

02

Introductions

03

Guiding Principals

04

Safety

05

Programming/  
PTA/  
Registration





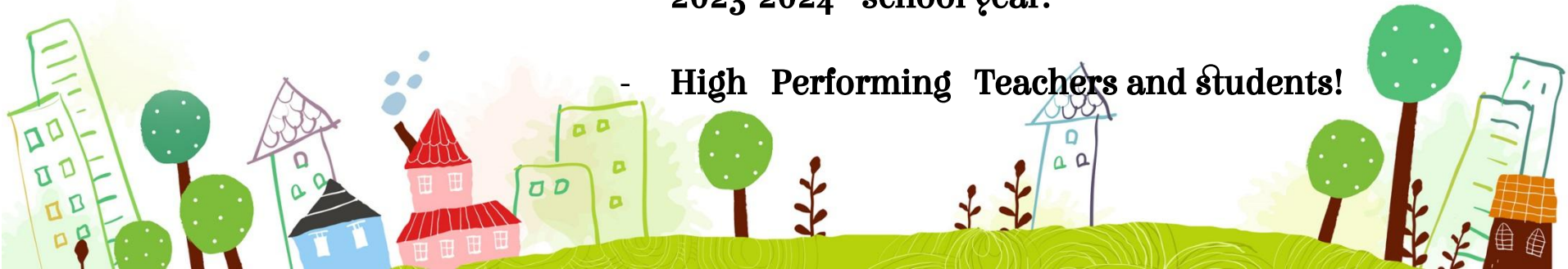
# 01 School Overview

Blue Lake Elementary School- Established August 2022





- Land was donated by The City of Boca Raton
- Projected enrollment in 2024-2025 - 906 students
- All safety measures meet new state requirements!
- Most updated technology the school district has
- Over 650 PTA Members/Volunteers during the 2023-2024 school year.
- High Performing Teachers and students!



02

# Meet Our Instructional Staff!

Mrs. Chelsea Akkus

Ms. Cathy Archer

Ms. Kelsey Claar

Mrs. Giovanna Penner

Ms. Mia Novakowski

Ms. Jordan Tell

Ms. Toni Yazurlo



# Who to Contact @ Blue Lake



**Mariel Stark** - Exceptional Student Education(ESE) Coordinator: [Mariel.Stark@palmbeachschools.org](mailto:Mariel.Stark@palmbeachschools.org)

**Victoria Essi** - Data Processor (registration information): [Victoria.Essi@palmbeachschools.org](mailto:Victoria.Essi@palmbeachschools.org)

**Joline West**- Cafeteria Manager: [Joline.West@palmbeachschools.org](mailto:Joline.West@palmbeachschools.org)

**Christine Garcia** - English Language Learners (ELL) Coordinator: [Christine.Garcia@palmbeachschools.org](mailto:Christine.Garcia@palmbeachschools.org)

**Corena Vlahakis** - After the Bell (ATB) Director: [Corena.Vlahakis@palmbeachschools.org](mailto:Corena.Vlahakis@palmbeachschools.org)

**Natalia Zapata-Henao**- Guidance Counselor and 504 Contact: [natalia.zapatahenao@palmbeachschools.org](mailto:natalia.zapatahenao@palmbeachschools.org)

**Pamela Kline** - School Nurse: [pkline@hcdpbc.org](mailto:pkline@hcdpbc.org)

**Nicole Pennaso** - Assistant Office Secretary (attendance): [Nicole.Penasso@palmbeachschools.org](mailto:Nicole.Penasso@palmbeachschools.org)

**Seth J. Moldovan** - Principal: [Seth.Moldovan@palmbeachschools.org](mailto:Seth.Moldovan@palmbeachschools.org)

**Shari Feranga** - Assistant Principal: [Shari.Farenga@palmbeachschools.org](mailto:Shari.Farenga@palmbeachschools.org)

# School Layout



Main Building- Three levels  
(All Classrooms)

- K/1- First Floor
- 1/2/3- Second Floor
- 3/4/5- Third Floor

Art Room, Music Room,  
Media Center, and Cafeteria.



# Our Staff- By the Numbers!

1. (28) Reading Endorsed Teachers
2. (18) Gifted Endorsed Teachers or working towards endorsement.
3. (31) ESOL Endorsed Staff Members
4. (16) Bilingual Staff members
5. Average Teacher “Years of Experience”- 10



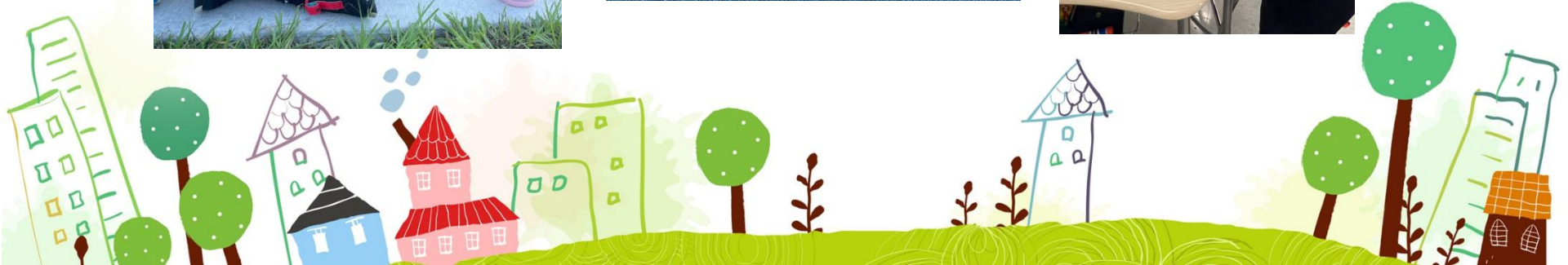


# My Journey and My WHY !



03

# Guiding Principles



## Blue Lake Elementary School Philosophy of Teaching and Learning

**Learn Passionately:** We provide **rigorous student-centered learning experiences** and support student's ability to **drive their own learning** through a relevant and immersive experience.

**Foster Community:** We embrace **strong relationships** as a critical component for successful learning.

**Embrace Diversity and Equity:** We focus on practices, pedagogies, and curricula that encourage **inclusion and equity**.

**Break Boundaries:** We support deep learning that happens across disciplines and in **non-traditional settings**.

**Create Change:** We nurture learners to be **active and engaged citizens** who address real problems, share their unique perspectives, and make an **impact in our school and throughout our community**.

A successful school has **strong systems** and **processes** in place! Be intentional!

### **POSITIVE BEHAVIOR SUPPORT PROGRAM**

A universal guide for all students, staff, and community members to

### **RESPONSE TO INTERVENTION**

Early identification and support of students with learning and behavior needs.

### **COMMUNITY SUPPORT**

Identify and encourage community organizations to support our school.

### **SOCIAL EMOTIONAL LEARNING**

Development of healthy identities, manage emotions, and achieve personal and collective goals.

### **SAFETY**

Proactive planning to be prepared for any challenges which may arise.

### **ACADEMIC EXCELLENCE**

Ensure academic excellence in all classrooms for all students.

04

# School Safety



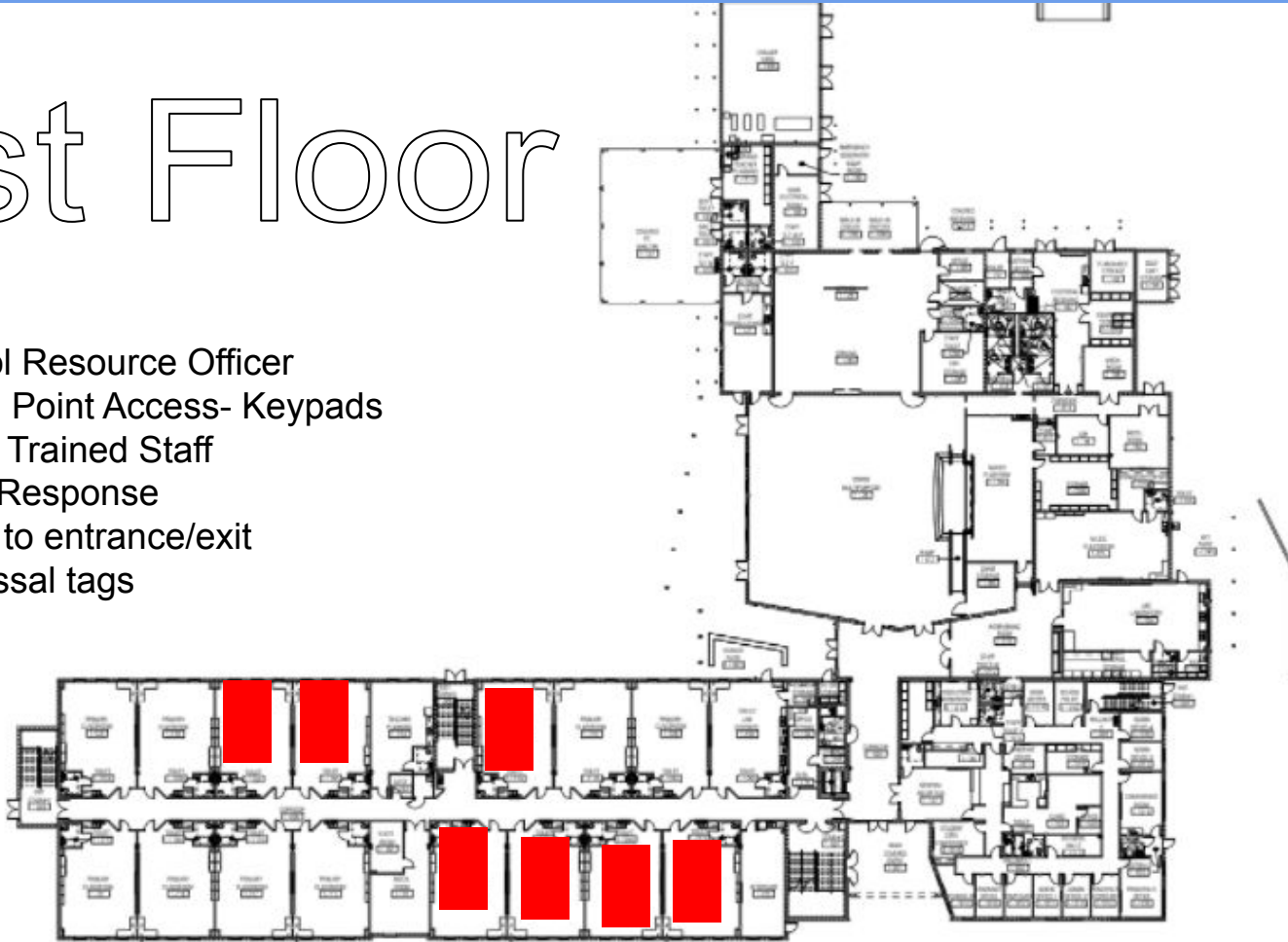
- **Full time Officer on Campus**
- **Classroom doors are locked at all times**
- **ID Badges are worn by all employees & visitors**
- **“See Something, Say Something”**
- **Code Drills are practiced throughout the year, after we teach students, what to do in case of an emergency.**
- **Our new building was built to safety protocols required following the Marjory Stoneman Douglas tragedy.**
- **Universal Student Badges**



# First Floor

## Highlights-

1. School Resource Officer
2. Single Point Access- Keypads
3. VITAL Trained Staff
4. EPIC Response
5. Close to entrance/exit
6. Dismissal tags



**EDUCATE**







### Gifted/Advanced

Gifted  
paperwork

### ESOL

- Testing takes place at the beginning of school.

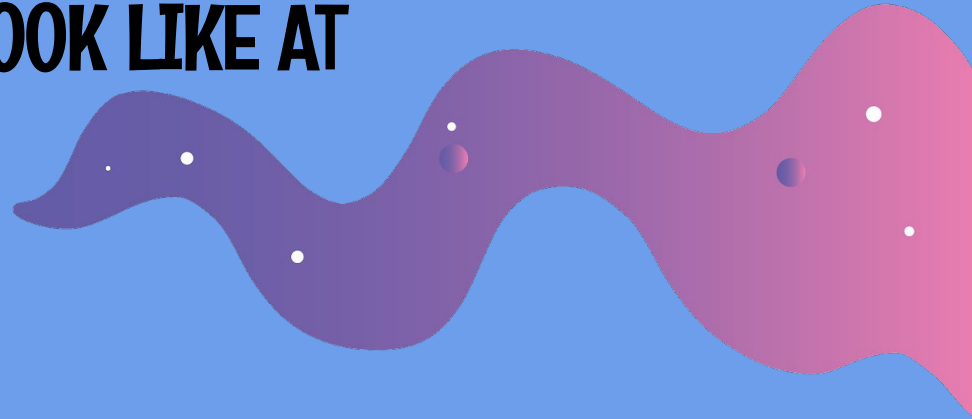
### ASD

IEP determines  
placement.

Speech  
Language  
Services

# BLUE LAKE INSTRUCTIONAL PROGRAMMING

# WHAT DOES A TYPICAL DAY LOOK LIKE AT Blue Lake?



- **Gator News (Morning Announcements)**
- **Literacy Block**
- **Writing**
- **Lunch**
- **P.E. Teach (outdoor recess)**
- **Math**
- **Fine Arts (Music, Art, PE, Robotics, Guidance, Media)**
- **Diff Instruction (extra reading or enrichment)**
- **Science/Social Studies**
- **Dismissal**



# LITERACY AT Blue Lake

We will offer a variety of programs to encourage lifelong reading!

- ✓ I-ready
- ✓ Benchmark “Core Curriculum”
- ✓ Weekly visits to the Media Center through the Fine Arts wheel
- ✓ Authors Alley to spotlight writing
- ✓ Digital Literacy
- ✓ Author Visits
- ✓ Career Day



Kindergarten Readiness Kits- FREE!!!-  
Please make sure you get one before  
leaving tonight!

# Lunch/Recess



- 30 minutes
- Try to pack a healthy lunch
- Practice opening packages Independently
- Water Bottle Every Day
- Supervised Play
- Designated Play- Rotation
- Closed Toed Shoes

Please No Toys From Home

---

# Cambridge Primary at Blue Lake

Cambridge  
Pathway



A clear path for educational success from age 5 to 19

## Cambridge Primary

5 to 11 years old\*

- English (1st and 2nd language)
- Mathematics
- Science
- ICT
- Cambridge Global Perspectives

## Cambridge Lower Secondary

11 to 14 years old\*

- English (1st and 2nd language)
- Mathematics
- Science
- ICT
- Cambridge Global Perspectives

## Cambridge Upper Secondary

14 to 16 years old\*

- A wide choice of subjects at:
- Cambridge IGCSE™ (70+ subjects)
  - Cambridge O Level (40+ subjects)
- Cambridge ICE Certificate

## Cambridge Advanced

16 to 19 years old\*

- A wide choice of subjects at:
- Cambridge International AS & A Level (55+ subjects)
  - Cambridge Pre-U (20+ subjects)
- Cambridge AICE Diploma  
Cambridge IPQ

Cambridge Professional Development for teachers and school leaders

*\*Age ranges are for guidance only*

Learn • Discover • Achieve

**AFFIRM**



# Blue Lake Elementary

## P.B.I.S



### What is P.B.I.S.?

Positive behavioral interventions and supports (PBIS) is an approach schools use to promote school safety and good behavior. With PBIS, schools teach kids about behavior expectations and strategies. The focus of PBIS is prevention, not punishment

At B.L.E, our Matrix is designed around the Gator "C.H.O.M.P"

Cautious  
Honor  
Ownership  
Manners  
Positive



### Student Rewards May Include:

- Gator Bucks to shop at the school store
- Perfect attendance Pizza Parties
- Dress down days
- Spinning a wheel for a prize on the morning news for CHOMPliments
- Outside lunch picnics
- CHOMPION - "Gator" of the week

\*\*See Back side for full Matrix

### We need YOU!

#### What can you do as parents?

- Talk to your child about school expectations and behavior
- Monitor your child's PBIS progress through the SIS parent Gateway
- Collaborate frequently with your child's teacher to ensure open lines of communication
- Be an active member of your child's education
- Promote kindness, acceptance, and inclusion
- Stay involved in your child's personal lives and monitor social media
- Support BLE dress code
- Make sure your child is at school *on time* or *on a bus* to maximize instructional minutes
- Volunteer for events and initiatives



## Positive Behavior Support

Positive Behavior Support (PBS) is an evidence-based approach, which aims to enhance the Quality of Life and minimize individuals' problematic behavior (Carr, et al. 2002). To achieve that, PBS focuses on the development of individuals' positive behaviors (behaviors that are associated with academic, health, social, recreational, community and family achievement).



C.H.O.M.P.



All Settings

Cautious	<ul style="list-style-type: none"> <li>★ Safety first</li> <li>★ Use walking feet</li> <li>★ Keep hands, feet, and objects to yourself</li> <li>★ Maintain personal space</li> <li>★ If you see something, say something! (tell the closest adult)</li> </ul>
Honor	<ul style="list-style-type: none"> <li>★ Be truthful</li> <li>★ Maintain integrity</li> <li>★ Be a team player</li> <li>★ Have good morals</li> <li>★ Be genuine and sincere</li> <li>★ Choose kindness</li> </ul>
Ownership	<ul style="list-style-type: none"> <li>★ Be accountable for your actions</li> <li>★ Make good choices</li> <li>★ Follow directions</li> <li>★ Be responsible</li> <li>★ Follow Blue Lake dress code</li> <li>★ Work to your fullest potential</li> <li>★ Come to school ready to learn</li> <li>★ Use designated appropriate voice levels</li> </ul>
Manners	<ul style="list-style-type: none"> <li>★ Be polite</li> <li>★ Use kind words</li> <li>★ Say "please" and "thank you"</li> <li>★ Show respect for others</li> <li>★ Help others</li> <li>★ Be inclusive</li> </ul>
Positive	<ul style="list-style-type: none"> <li>★ Come to school with a growth mindset</li> <li>★ Show pride in your work</li> <li>★ SMILE</li> <li>★ Give compliments</li> <li>★ Celebrate the efforts of others</li> </ul>



OUR CLASS RECEIVED A BLUE LAKE GATOR

C.H.O.M.P - L I M E N T

\*\*If a staff member notices your class demonstrating C.H.O.M.P. behavior and you get a COMPLIMENT, color in a letter. When all 11 are filled in, turn this form in to "spin the wheel" on the morning news for a prize!



Gator Glow

Name: \_\_\_\_\_

Teacher: \_\_\_\_\_ Grade: \_\_\_\_\_

Student Demonstrated which CHOMP Behavior?

\_\_\_ Cautious

\_\_\_ Honor

\_\_\_ Ownership

\_\_\_ Manners

\_\_\_ Positive

Describe action: \_\_\_\_\_

\_\_\_\_\_

\_\_\_\_\_

BLUE LAKE ELEMENTARY  
CHOMPION of the Week



awarded to:



for:

Demonstrating CHOMP behavior

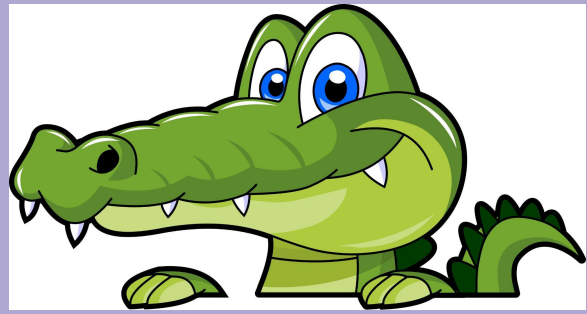
Principal - Mr. Moldovan

Classroom Teacher

Date



# GATORS



# School Effectiveness Survey



Participation Rate	Overall Ratings	Item Ratings
Items by School	Student Subgroup	Supplement
Item List		

Portfolio	
All	
School Type	Title 1
All	All
School	
Blue Lake Elementary	
Student Grade	Staff Type
All	All
Year	
2023	2024

## FY23 & 24 School Effectiveness Survey Results - Items by Group

Percent of Respondents Providing Positive Ratings

Group Category	Student		Staff		Parent	
	2023	2024	2023	2024	2023	2024
<b>Committed and Impactful Employees</b>			98.9%	98.2%		
I am satisfied being a teacher at this school.			100.0%	97.6%		
School administrators provide effective instructional leadership.			98.2%	98.9%		
Staff feel safe at school.			100.0%	98.9%		
Teacher input is included in decision-making at this school.			98.1%	96.7%		
There is a great deal of trust among teachers and school administrators.			98.2%	98.9%		
<b>Family Involvement</b>	95.8%	96.6%	100.0%	98.5%	96.2%	87.6%
Families feel welcome at this school.	94.8%	95.9%	100.0%	98.9%	98.1%	87.5%
Parents communicate with my teachers.	97.5%	96.9%	100.0%	97.8%	95.5%	90.0%
Teachers inform parents about student's academic progress.	94.9%	97.0%	100.0%	98.9%	94.9%	85.4%
<b>Mental Health &amp; Wellness</b>	88.6%	84.7%	99.0%	97.5%	95.0%	85.2%
Students are treated with respect by adults at school.	94.8%	92.7%	100.0%	98.9%	97.4%	87.2%
Students have at least one adult at school who they can talk to about problems.	82.4%	84.0%	98.1%	98.9%	95.6%	86.1%
Students respect each other at this school.	83.9%	77.3%	98.1%	94.6%	92.4%	82.4%
<b>Safety</b>	90.9%	91.4%	99.4%	98.9%	97.1%	84.6%
School staff will act quickly if students are bullied.	86.8%	87.7%	98.1%	98.9%	95.1%	77.8%
Students are safe at this school.	95.0%	95.7%	100.0%	98.9%	98.1%	87.8%
Students feel like they belong at school.	90.7%	90.6%	100.0%	98.9%	97.4%	86.8%
<b>School Effectiveness</b>	90.6%	93.8%	100.0%	98.5%	95.5%	84.2%
Students use ideas taught in school in daily life.	87.4%	90.7%	100.0%	98.8%	96.1%	83.4%
Teachers prepare students for what they need to know next year.	98.3%	99.1%	100.0%	98.8%	95.3%	85.5%
The school sets high expectations for ALL students.	89.0%	91.5%	100.0%	97.8%	95.3%	83.8%
<b>Student Agency</b>	91.0%	93.5%	100.0%	98.1%	95.0%	85.5%
Students believe that if they try hard, they can learn anything.	90.7%	94.9%	100.0%	97.8%	96.1%	87.3%
Students can control how well they do in school.	90.3%	93.1%	100.0%	97.7%	94.6%	83.6%
Students look forward to participating in activities at school.	92.2%	92.5%	100.0%	98.9%	94.2%	85.4%
<b>Total</b>	<b>90.7%</b>	<b>92.0%</b>	<b>99.4%</b>	<b>98.3%</b>	<b>95.6%</b>	<b>85.5%</b>

Blue - 90% to 100% Positive Ratings  
 Green - 80% to 89% Positive Ratings  
 Gold - 70% to 79% Positive Ratings  
 Red - 0% to 69% Positive Ratings

Note: "--" denotes fewer than 10

The background features several stylized blue clouds with a circular, swirling pattern, scattered across the upper half of the page.

# Important “Things To Know!”



# DRESS CODE- GATOR GEAR!

## CAN BE WORN EVERY DAY

[HTTPS://WWW.BLUELAKEPTA.ORG/HOME](https://www.bluelakepta.org/home)



SPORTS GRAY



MINT GREEN



DAISY



CAROLINA BLUE

# DRESS CODE- Handout in packet



## The **BEST** Way to Buy Back-to-School Supplies!

Click Here to  
Order Now!  
Order by July 1st

- ✓ The Exact School Supplies  
Your Teacher Requested
- ✓ Name Brand Products Like:

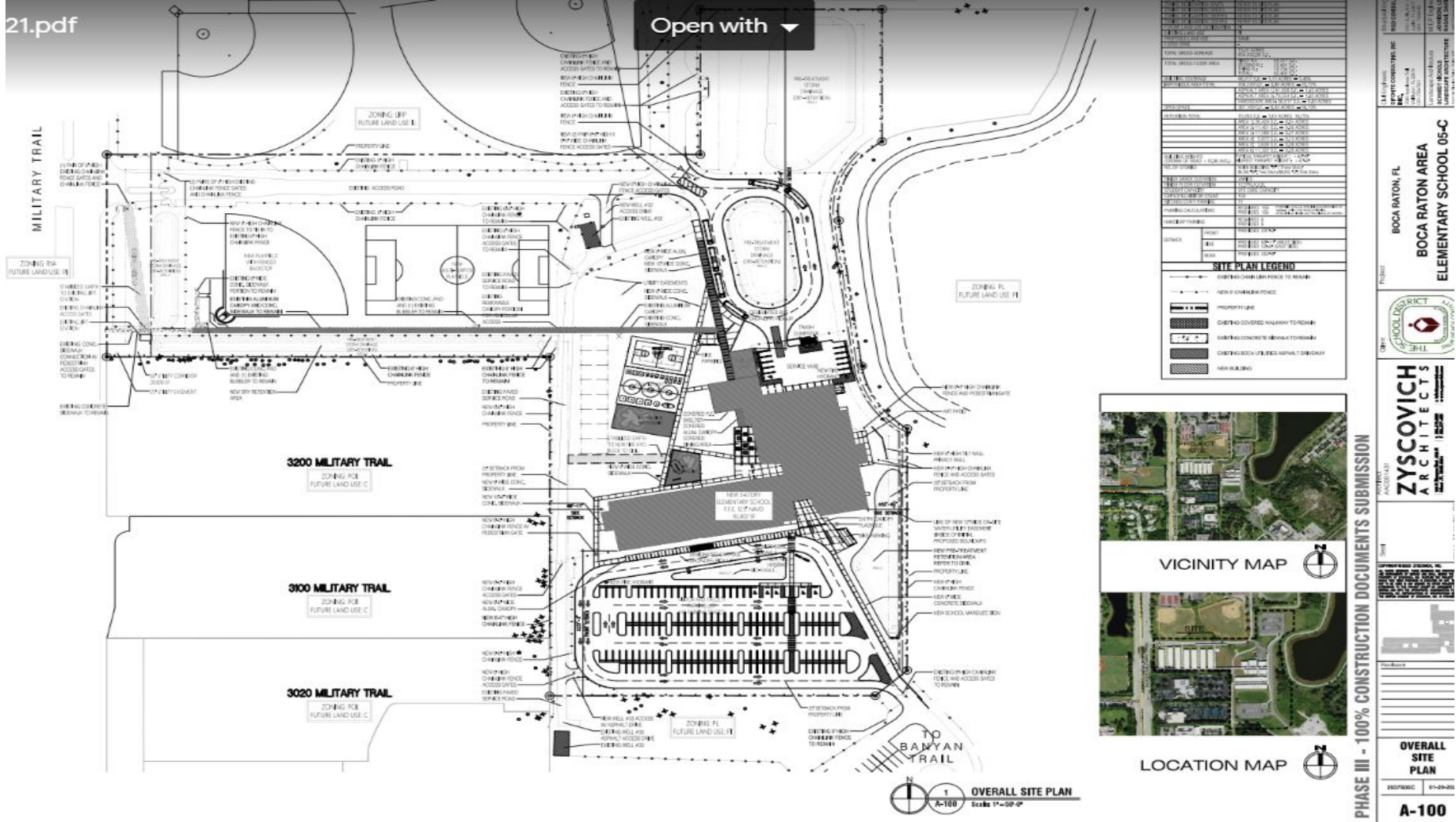


Pre-Order Today at: [www.1stDaySchoolSupplies.com](http://www.1stDaySchoolSupplies.com)

# SUPPLY LISTS-

[HTTPS://1STDAYSCHOOLSUPPLIES.COM/KITS.PHP?SID=1178987](https://1stdayschoolsupplies.com/kits.php?sid=1178987)

Open with



PROJECT INFORMATION	
PROJECT NAME	BOCA RATON AREA ELEMENTARY SCHOOL 05-C
OWNER	FLORIDA DEPARTMENT OF EDUCATION
DESIGNER	ZYSCOVICH ARCHITECTS
DATE	07-29-20
SCALE	AS SHOWN
GENERAL NOTES	
1. ALL CONSTRUCTION SHALL BE IN ACCORDANCE WITH THE LATEST EDITIONS OF THE INTERNATIONAL BUILDING CODE (IBC) AND THE LATEST EDITIONS OF THE INTERNATIONAL RESIDENTIAL CODE (IRC).	
2. THE DESIGNER HAS CONDUCTED VISUAL AND PHYSICAL SURVEYS OF THE SITE AND HAS FOUND NO OBSTACLES TO CONSTRUCTION.	
3. THE DESIGNER HAS CONDUCTED A PRELIMINARY ENGINEERING ANALYSIS OF THE SITE AND HAS FOUND NO OBSTACLES TO CONSTRUCTION.	
4. THE DESIGNER HAS CONDUCTED A PRELIMINARY ENVIRONMENTAL ANALYSIS OF THE SITE AND HAS FOUND NO OBSTACLES TO CONSTRUCTION.	
5. THE DESIGNER HAS CONDUCTED A PRELIMINARY HISTORIC PRESERVATION ANALYSIS OF THE SITE AND HAS FOUND NO OBSTACLES TO CONSTRUCTION.	
6. THE DESIGNER HAS CONDUCTED A PRELIMINARY ARCHAEOLOGICAL ANALYSIS OF THE SITE AND HAS FOUND NO OBSTACLES TO CONSTRUCTION.	
7. THE DESIGNER HAS CONDUCTED A PRELIMINARY GEOTECHNICAL ANALYSIS OF THE SITE AND HAS FOUND NO OBSTACLES TO CONSTRUCTION.	
8. THE DESIGNER HAS CONDUCTED A PRELIMINARY HYDROLOGICAL ANALYSIS OF THE SITE AND HAS FOUND NO OBSTACLES TO CONSTRUCTION.	
9. THE DESIGNER HAS CONDUCTED A PRELIMINARY CLIMATE ANALYSIS OF THE SITE AND HAS FOUND NO OBSTACLES TO CONSTRUCTION.	
10. THE DESIGNER HAS CONDUCTED A PRELIMINARY AIR QUALITY ANALYSIS OF THE SITE AND HAS FOUND NO OBSTACLES TO CONSTRUCTION.	
11. THE DESIGNER HAS CONDUCTED A PRELIMINARY NOISE ANALYSIS OF THE SITE AND HAS FOUND NO OBSTACLES TO CONSTRUCTION.	
12. THE DESIGNER HAS CONDUCTED A PRELIMINARY VIBRATION ANALYSIS OF THE SITE AND HAS FOUND NO OBSTACLES TO CONSTRUCTION.	
13. THE DESIGNER HAS CONDUCTED A PRELIMINARY LIGHTING ANALYSIS OF THE SITE AND HAS FOUND NO OBSTACLES TO CONSTRUCTION.	
14. THE DESIGNER HAS CONDUCTED A PRELIMINARY SECURITY ANALYSIS OF THE SITE AND HAS FOUND NO OBSTACLES TO CONSTRUCTION.	
15. THE DESIGNER HAS CONDUCTED A PRELIMINARY ACCESSIBILITY ANALYSIS OF THE SITE AND HAS FOUND NO OBSTACLES TO CONSTRUCTION.	
16. THE DESIGNER HAS CONDUCTED A PRELIMINARY ENERGY ANALYSIS OF THE SITE AND HAS FOUND NO OBSTACLES TO CONSTRUCTION.	
17. THE DESIGNER HAS CONDUCTED A PRELIMINARY SUSTAINABILITY ANALYSIS OF THE SITE AND HAS FOUND NO OBSTACLES TO CONSTRUCTION.	
18. THE DESIGNER HAS CONDUCTED A PRELIMINARY TRANSPORTATION ANALYSIS OF THE SITE AND HAS FOUND NO OBSTACLES TO CONSTRUCTION.	
19. THE DESIGNER HAS CONDUCTED A PRELIMINARY UTILITIES ANALYSIS OF THE SITE AND HAS FOUND NO OBSTACLES TO CONSTRUCTION.	
20. THE DESIGNER HAS CONDUCTED A PRELIMINARY COMMUNITY ANALYSIS OF THE SITE AND HAS FOUND NO OBSTACLES TO CONSTRUCTION.	

BOCA RATON, FL  
 BOCA RATON AREA  
 ELEMENTARY SCHOOL 05-C

ZYSCOVICH ARCHITECTS  
 ARCHITECTS



PHASE III - 100% CONSTRUCTION DOCUMENTS SUBMISSION

OVERALL SITE PLAN

DATE: 07-29-20

A-100

- **All traffic will enter and exit the campus off of Banyan Blvd.**
- **Practice getting out of the car over the summer.**
- **Students can only exit/enter on the passenger side.**
- **You will be asked to pull all the way forward in our carline.**

**Student**  
**Drop-off/Pick-up**



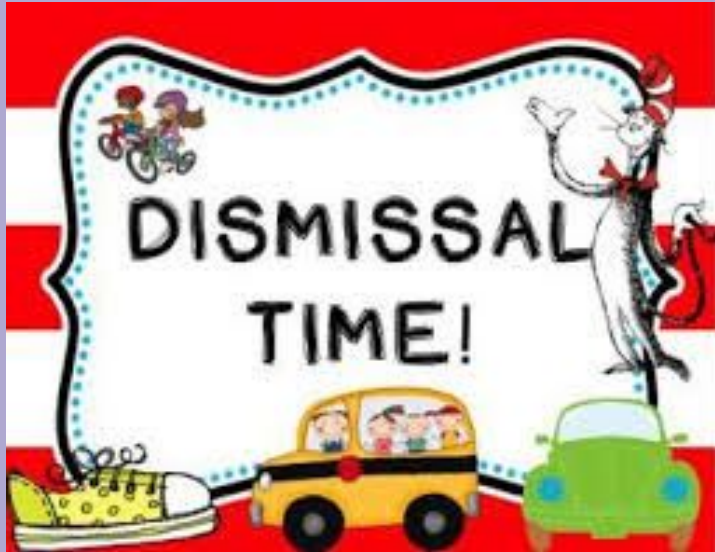


# In Your Seat at 8:00am or You're Late

At 8:00am, all parents must park and walk their child in to the front office. Students will be documented tardy and that goes on their permanent record. Arrive EARLY!



# How do I get home?



- Walker/Biker
- Bus
- Car Rider
- Aftercare

Car Rider- If your child will be car pick-up, you will receive car tags when you come to "Meet The Teacher."

Bus Riders- Will receive tags to designate which bus they ride. All routes are posted on the district website Late July/Early August.

Walkers will be escorted, to meet their parents at dismissal, at the bike rack near our bus-loop. (Military Trail)

No Dismissal changes without parental notification.

# After School Programming

1. Blue Lake Aftercare- Limited spaces (Apply Online- 7:00pm 4/17 for all students)
2. Outside vendors picking up at Blue Lake are listed on our website.
3. Afterschool programming- Vendor list online



**Blue Lake Aftercare Pre-Registration - Friday, May 6, 2022 at 6:00 pm**

*Posted: March 30, 2022*

**Burke at Work: Transportation**

*Posted: February 4, 2022*

**Upcoming Meeting Regarding Boundary Changes on February 10, 2022**

*Posted: February 3, 2022*

**PBCSD Celebrates the Great for 2022**



<https://bles.palmbeachschools.org/>

Blue Lake Web page

# NEXT STEPS

1. Complete and Return your registration packet online or in-person.
2. Sign-up for summer assessment- July 15th and 16th
3. Monitor email during summer months

- Registration form (*available either at [palmbeachschools.org/register](https://palmbeachschools.org/register) or at your zoned school's front office*).
- Proof of birth (*birth certificate, passport, religious records*).
- Proof of required immunizations from the child's doctor prior to the first day of school.
- Proof of a recent physical exam prior to the first day of school.
- Proof of residence in Palm Beach County (*two current documents reflecting the correct residential street address, such as a driver's license, electric bill, mortgage, lease agreement, rent receipt, United States Postal Service confirmation of address change, credit card statement, etc.*).
- Guardianship papers, if applicable.
- Additional helpful documents, information from a previous school.

# **Kindergarten Summer Assessments- July 15th and 16th**

**Meet The Teacher- Thursday , August 8, 2024 (9:00am-10:30am)**

**You will receive an email by August 7th with your teacher and room #.**

**Staggered Start-**

**Monday, August 12, 2024 (A-M)**

**Tuesday, August 13, 2024 (N-Z)**

**All Kindergarten families may walk their child/children to class on their staggered start day. Please pack your patience, as it will be crowded each morning.**

**Beginning, Wednesday, August 14, 2024 all kindergarten students will be dropped off in the car loop or by bus. Blue Lake Staff are strategically placed throughout campus to ensure that all students get to their assigned classrooms.**

**The Blue Lake Elementary Parent Teacher Association (PTA) is a non-profit, volunteer organization made up of parents, family members and staff members.**

**Our mission is to encourage and support a positive, safe and inclusive school environment where all students can thrive socially, emotionally and academically. We do this by sponsoring and funding programs, recruiting and mentoring volunteers, and working in collaboration with our staff, families and greater community.**

**What is the PTA (Parent Teacher Association)**


# PTA Executive Board

**The Blue Lake Elementary PTA will have an Executive Board. This Executive Board is an elected body of parents that coordinate the PTA functions with help from various committees and committee chairs. The Executive Board includes a:**

**President, Treasurer, VP of Fundraising, VP of Membership, VP of Programs, and a Secretary.**

**The PTA Executive Board recruits membership in the PTA, oversees various committees and fundraising in an official capacity, makes decisions about disbursement of PTA funds, responds to teacher and staff requests for PTA assistance and communicates PTA actions to the Blue Lake community.**





How can you get  
involved?

**ble\_gators\_principal**



Follow us on Instagram!



THANK YOU  
DO YOU HAVE ANY QUESTIONS !

